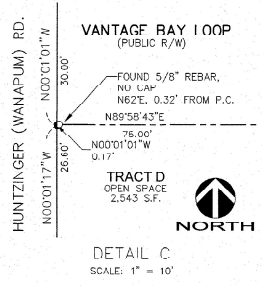
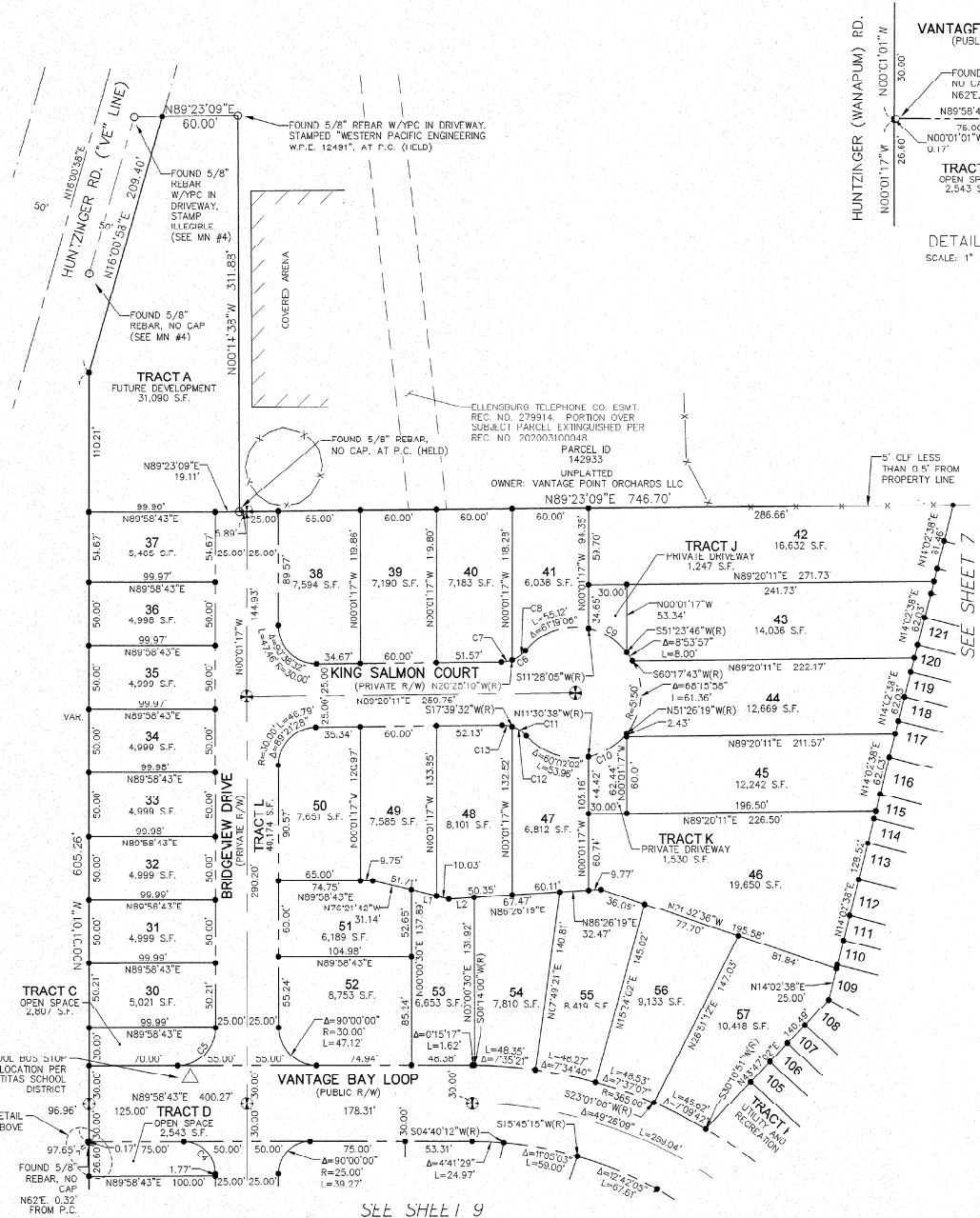




VANTAGE BAY PUD

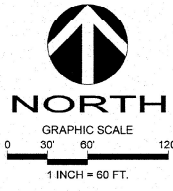
A PORTION OF THE EAST HALF OF THE SOUTHEAST QUARTER, AND A PORTION OF THE SOUTHEAST QUARTER OF THE NORTHEAST QUARTER OF SECTION 30, TOWNSHIP 17 NORTH, RANGE 23 EAST, W.M., KITTITAS COUNTY, WASHINGTON

RECORDING NO. **202105050023**
VOL/PAGE **13/120**
I PF-21-00002



LEGEND

- SECTION CORNER AS NOTED
- QUARTER SECTION CORNER AS NOTED
- SET STANDARD MONUMENT WITH BRASS DISK STAMPED "DRS 50708", IN MONUMENT CASE
- FOUND CORNER MONUMENT AS NOTED
- SET 5/8" X 24" REBAR WITH PLASTIC CAP STAMPED "DRS LS 50708"
- (R) RADIAL BEARING
- (R*) RECORD DIMENSION PER REFERENCE NOTED
- S.F. SQUARE FEET
- P PROPERTY LINE
- X- FENCE



HORIZONTAL DATUM:
NAD83/2011, WASHINGTON STATE PLANE, SOUTH ZONE.
ALL DISTANCES SHOWN HEREON ARE IN U.S. SURVEY FEET.
AN AVERAGE COMBINED SCALE FACTOR OF 1.00009247 WAS USED TO CONVERT GPS GRID COORDINATES TO GROUND.

BASIS OF BEARINGS:
N06°52'47"W (4794.77') BETWEEN FOUND MONUMENTS "M76W" AND "GP180-02" AS SHOWN HEREON.

- NOTES:
1. SEE SHEETS 11 AND 12 FOR PLATTED EASEMENTS.
 2. SEE SHEET 7 FOR LINE AND CURVE TABLES.



D.R. STRONG
CONSULTING ENGINEERS
ENGINEERS - PLANNERS - SURVEYORS
620 7TH AVENUE, KIRKLAND, WA 98033
O-425-627-3665 F-425-627-3425
www.drststrong.com